



Smart and simple cabling solutions







Factory for manufacture of optical fiber - TFO

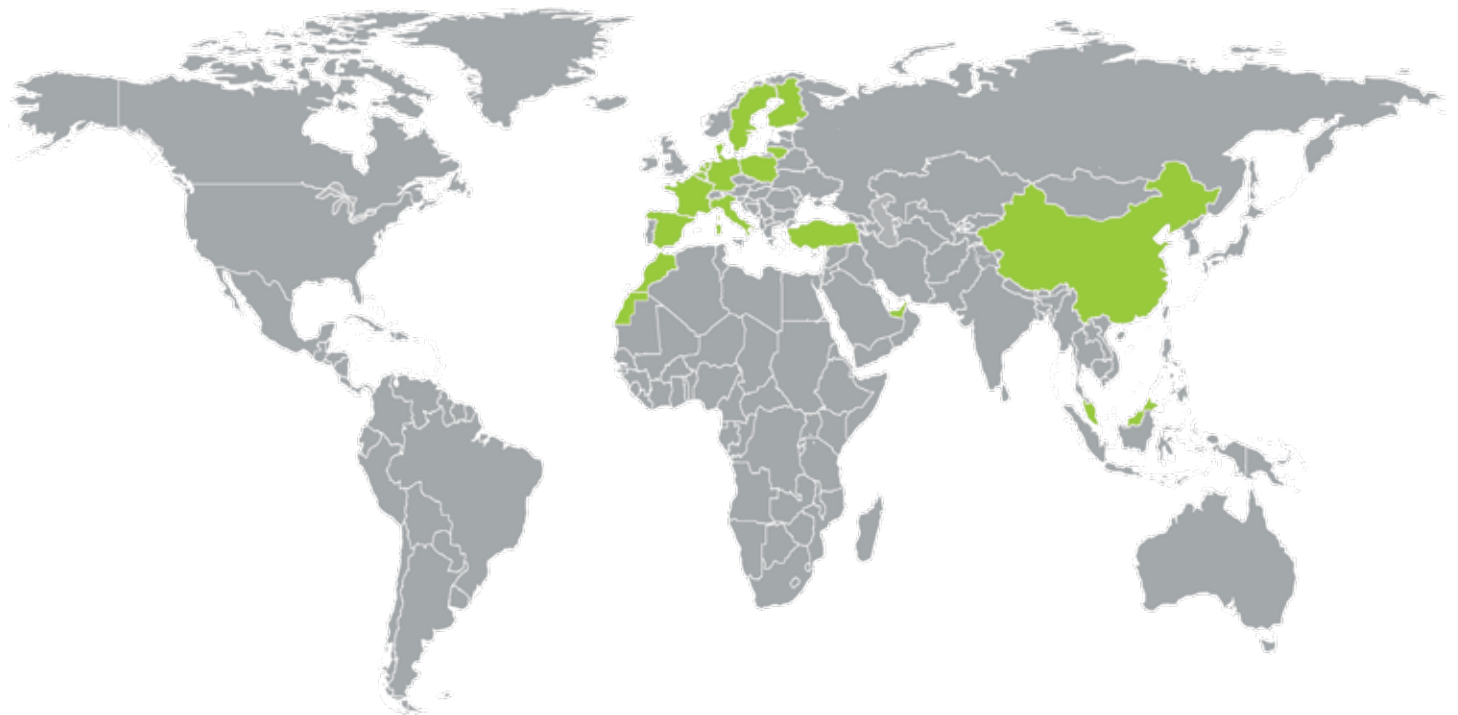
TKH Group specializes in the development of systems and solutions for telecommunications, building and industry.

Through its Multimedia Connect company, TKH Group designs, manufactures and markets a complete range of dedicated products and services for structured cabling: Copper systems in Categories 5e, 6 and 6a, optical solutions and patch racks. The diversity of this solution means it can meet the requirements of all environments, such as service-based or industrial buildings, medical environments, or data centers.

TKH Group owns the necessary production machinery to manufacture a complete system: copper cables, optical cables and connectors. With a focus on innovation, its developments meet even the most rigorous of the international standards, such as Category 6a.

The Multimedia Connect range, which is marketed through the group's subsidiaries, has a major international presence.

## MULTIMEDIA CONNECT AT INTERNATIONAL LEVEL





# A DEDICATED SOLUTION FOR EVERY ENVIRONMENT

## Business

Office cabling

## Data Center

Network infrastructure

## Administration

Schools and public institutions

## Medical

Hospitals, clinics and retirement homes

### Key Requirements

- Convergence
- Modularity of space
- Durability

- Performance
- Reliability
- High density

- Efficiency
- Management of public
- Flow coordination

- Flow convergence
- Ease of use
- Management of public

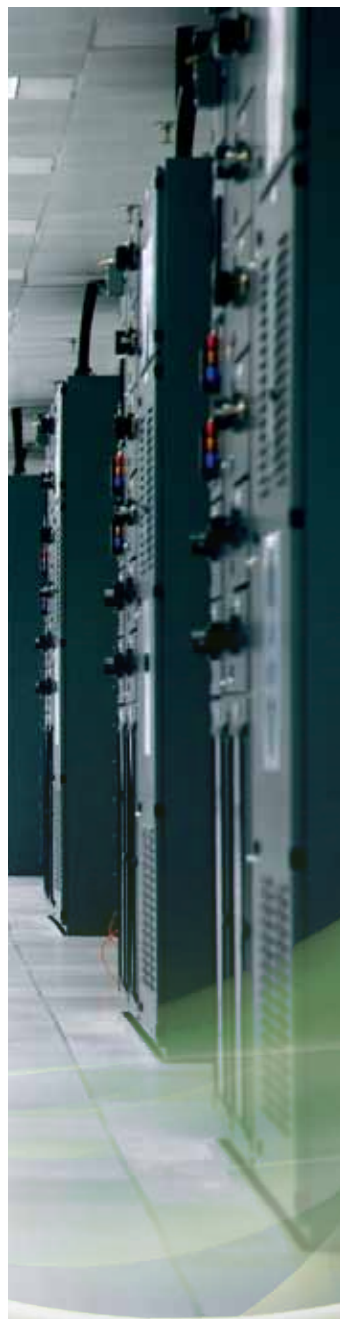
### MMC Solutions

- Copper systems of Category 5e to 6a
- Fiber optic systems OM1 to OS2
- Range pre-fitted with connectors
- 2P+T electrical sockets

- V-shaped patch panels and patch racks
- SERVER racks for extra-heavy loads
- Cables with LED identification
- MPO fiber optic range

- RJ45 plug with secured connection
- RJ45 balloons
- Racks and boxes

- RJ45 socket with locking system
- Complete range chemical-resistant
- Ultra flexible cables



## Residential

Private and collective housing

## Hotels

Hotels, Resorts and holiday centers

## Transport

Airports and stations

## Industry

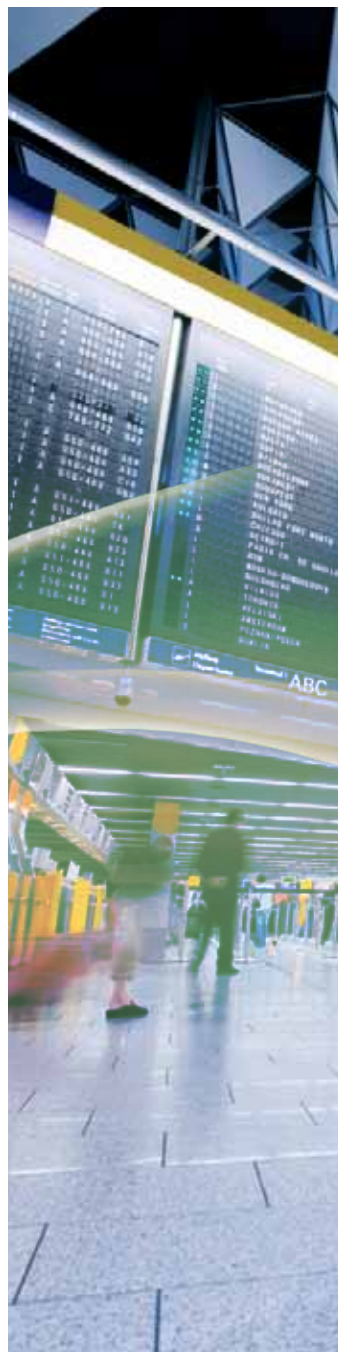
Production units, platforms and factories

### Key Requirements

- Ergonomics and design
- TV Infrastructure
- Operator network
- Multiple applications
- Maintenance
- Durability
- Immunity
- Safety
- Management of public
- Immunity
- Resistance to chemicals and hydrocarbons
- Mechanical stresses

### MMC Solutions

- Residential communication units
- Grade 1 and grade 3 cables, cords and connectors
- FTTH (Fiber To The Home)
- Twisted pair cabling for digital terrestrial TV
- Modular patch panels
- 25-year system warranty
- Shielded cables and connectors
- 'Technic' racks
- IK10 shock absorbing systems
- Leak-tight connectors and housings
- Polyurethane sheathed cables
- Ultra-flexible multi-strand cables





# FACTORIES: AT THE HEART OF PRODUCTION

The Manufacturing division of TKH Group consists of specialist factories, some of which have been in operation for more than 50 years, in various fields associated with industry and construction.

This production apparatus allows Multimedia Connect to guarantee the quality and performance of the key components of its system: Optical fiber and copper connectors and cables.



## **MMC Connectivity Factory**

(France)

Engineering firm and production of connectors and sheet metal.

## **CMF**

(Taiwan)

Engineering firm and production of connectors and sheet metal.

## **Kabeltechnik**

(Poland)

Assembly workshop for connectors and pre-connected links.

## **TFO**

(China)

Factory for manufacture of optical fiber (preformed and cable-pulling) and optical fiber cable.

Specialization: Single-mode optical fiber

Specialization: Single-mode optical fiber

## **TKF**

(Netherlands)

Factory for manufacture of copper cables and optical fiber cables.

Specialization: Microstructure optical fiber.

## **ZTC**

(China)

Factory for manufacture of Data and Telecom copper cables.

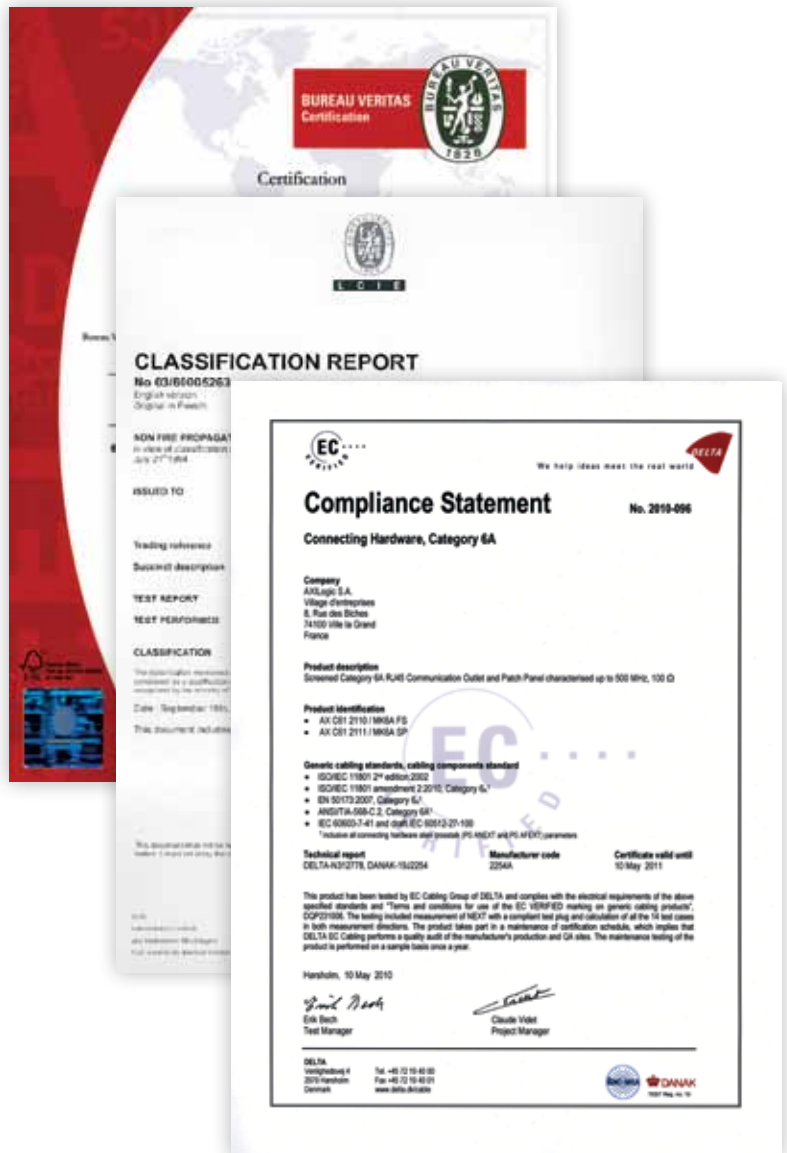
Specialization: Multi-pair cables.

# QUALITY, STANDARDS AND CERTIFICATION

Thanks to its compliance with the ISO 9001 (Manufacturing process) and ISO 14001 (Environment) standards, TKH Group ensures a constant and controlled quality of production.

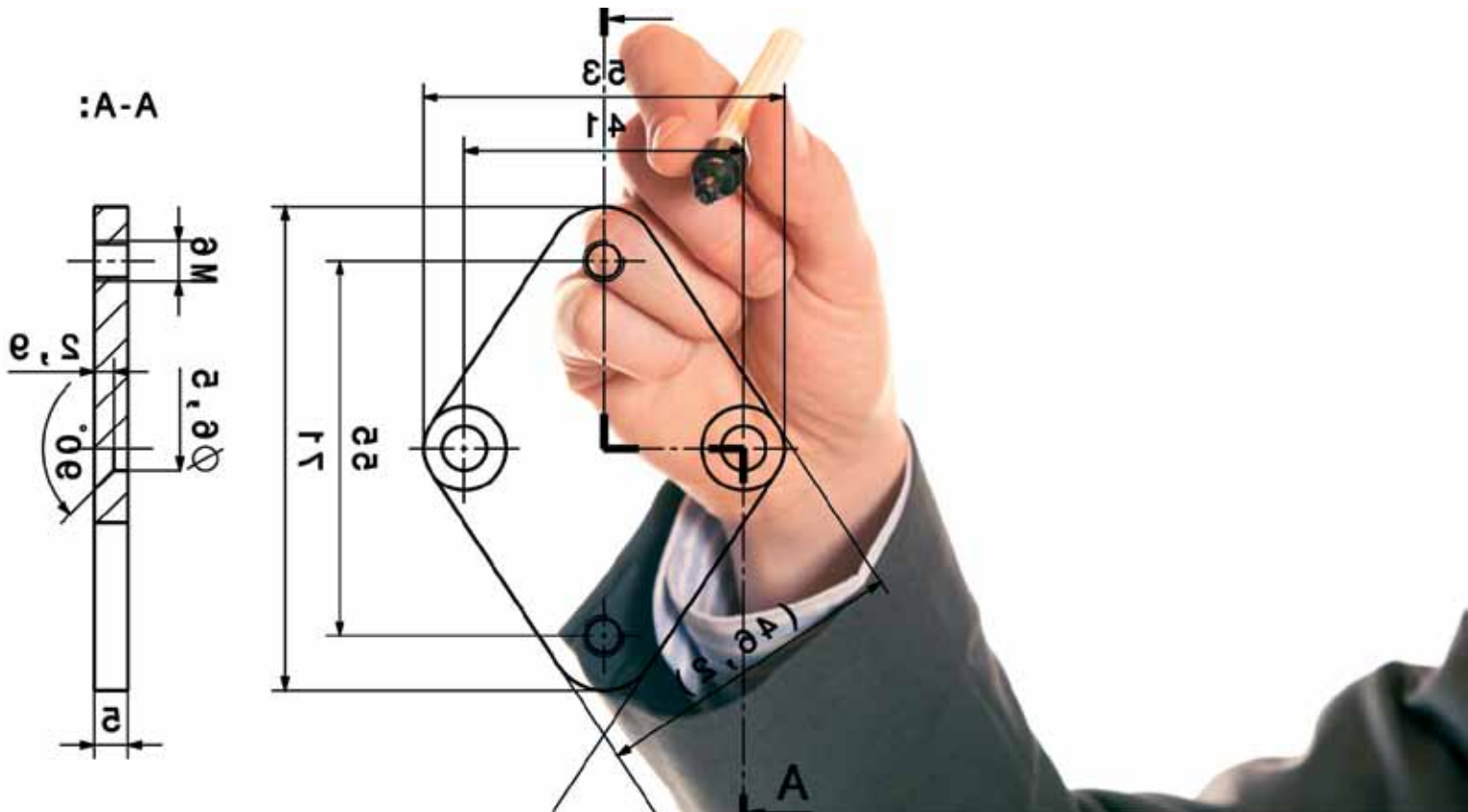
In order to guarantee the performance of its products, Multimedia Connect subjects its solutions to certification issued by independent laboratories, such as:

- DELTA
- ETL
- UL
- LCIE
- DNV



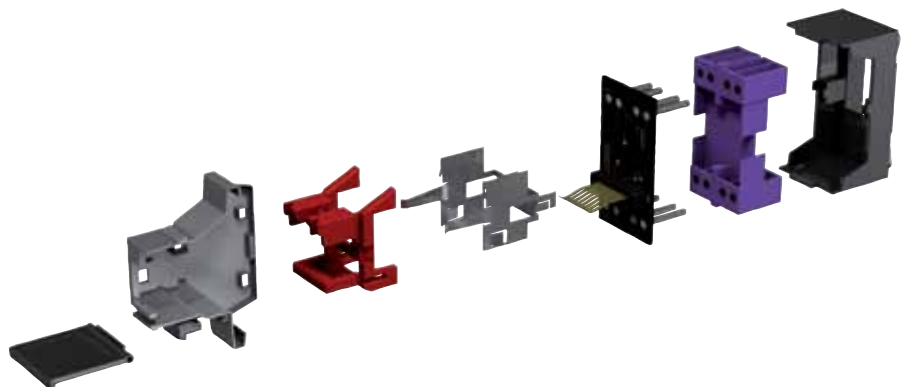
# INNOVATION DRIVING STRATEGY

As a member of the standards committees, Multimedia Connect has always based its positioning on a strategy of innovation that is particularly evident in its RJ45 connectors, a key part of the VDI systems (Video-Data-Images). For new product developments, Multimedia Connect uses the specific expertise of its two specialist engineering department. This industrial strategy has worked to bring many patented and certified projects to completion.



## EXPERTISE

- Plastics technology
- Metal construction
- Printed circuit design
- High bandwidth hardware
- Industrial design
- Electrical and electronic cabling



Multimedia Connect was one of the first manufacturers to obtain the ISO Category 6a certification, with its MK6A RJ45 connector.



# 25-YEAR SYSTEM WARRANTY



Multimedia Connect guarantees\* its copper 5e, 6, 6A and optical systems for 25 years. For any installation covered by this warranty, Multimedia Connect is committed to reconditioning and repairing any link (Permanent Link) that would not comply with the performance levels of the applicable standards and specifications.

In its training centre, Multimedia Connect provides customers with the necessary knowledge and skills for the implementation and on-site certification of structured cabling projects.

Multimedia Connect has a network of more than 1000 certified installers.

\* Warranty subject to conditions

## EXPERT SUPPORT AND ADVICE



Multimedia Connect provides its customers and partners with all technical support and expert advice they may request.

Documents and product selection guides are also available in order to assist customers in making the best choices for their solution.

## SOME

### Transport

AIR FRANCE  
PARIS AIRPORT  
BRUSSELS AIRPORT

### Petrol and gas

PETROL & GAS CENTRE (Madagascar)  
SCHLUMBERGER OIL (Algeria)  
TOTAL

### Commercial buildings

CHANEL  
LVMH  
SUEZ  
EDF  
AIR LIQUIDE  
ARCELOR MITTAL head offices (Belgium)  
IKEA (Romania)  
NOKIA technical centre Eastern Europe (Romania)

### Telecommunications & integration

SFR  
COLT  
ROCKWELL COLLINS

### Education

International Motor show Geneva (Switzerland)  
GHENT & LEUVEN University (Belgium)  
Ministry of Education (Iran)

### Banks

BANK OF COMOROS (Comoros)  
CREDIT AGRICOLE  
NATIXIS  
SOCIETE GENERALE (Ivory Coast)

### Government and public institutions

Tehran Municipality (Iran)  
Ministry of Commerce and Industry (Turkmenistan)  
Ministry of Finance – Paris  
French Army

## TKH GROUP KEY FIGURES

**1100 M€** : Revenue

**4062** : Number of employees

**70** : Number of subsidiaries



### TOWN HALL (France)

The Multimedia Connect solution was selected for the town hall by the City of Lyon, due to its ease of adaptation to the particular architectural constraints applicable for this type of building.



### NATIONAL ARCHIVES (Netherlands)

The Netherlands entrusted its national archives centre, holding the entire history of the country as well as documents of the highest importance, to Multimedia Connect.







[www.multimedia-connect.fr](http://www.multimedia-connect.fr)

**Factory and Headquarters**

MULTIMEDIA CONNECT  
8, rue des Biches  
74100 Ville la Grand  
France

**Commercial department**

MULTIMEDIA CONNECT  
ZAC des Hauts de Wissous  
« Air Park de Paris »  
Bâtiment le Cormoran  
3 rue Jeanne Garnerin  
91320 Wissous  
France  
T: +33 (0) 1 69 79 39 80  
F: +33 (0) 1 64 48 29 84



member of the TKH Group <